



## Premium Wireguard EM Batten 1x18W LED Tube

- Premium emergency wide body batten
- Powdercoated wireguard
- Australian classification D50
- LED emergency integrated system
- Long life battery
- Low energy consumption
- Long life emergency LED
- Uniform emergency distribution
- Premium design
- LED Tube for normal operation  
LED Microwave sensor tube for  
maximum Energy Saving

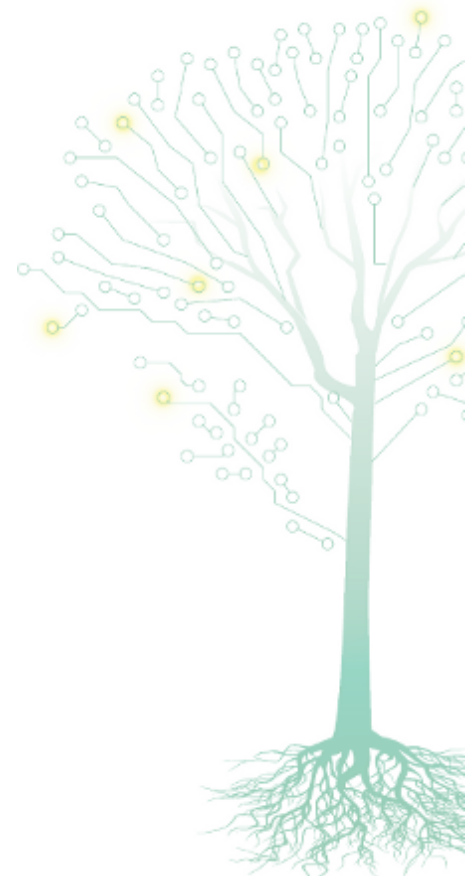
This emergency fitting is now available with the latest LED tubes.

Wireguard wide body emergency batten complete with high quality electronic ballasts and LED emergency pack.

Emergency LED's works independently of fluorescent tubes providing better reliability and problem free wiring.

The wide body covers any ceiling entry holes or junction boxes for quality installation.

Uniform distribution of the LED emergency light makes it easier to design the emergency installation while gives superior spacing.



## ORDERING INFORMATION

CODE	DESCRIPTION	PRODUCT NUMBER	POWER	CARTON QTY.	WEIGHT (NET/ GROSS)
4110	Premium Wireguard EM Batten 1x36	9336462041109	36.7W	1	3.05 Kg / 3.54 Kg
4127	Premium Wireguard EM Batten 1x36 (FULL DALI)	9336462041277	37.7W	1	0.00 Kg / 0.00 Kg
4112	Premium Wireguard EM Batten 1x36 (DALI)	9336462041123	36.7W	1	0.00 Kg / 0.00 Kg
4190	Premium Wireguard EM Batten 1x36 (Wireless)	9336462041901	36.7W	1	0.00 Kg / 0.00 Kg

## OPERATIONAL INFORMATION

GENERAL				BATTERY	
<b>Voltage (V)</b>	220-240V	<b>Viewing Distance</b>	N/ A	<b>Battery Type</b>	NiMH
<b>Frequency (Hz)</b>	50/60	<b>Classification</b>	C0:D50 C90:D50 C180:D50	<b>Battery Code</b>	1919
<b>Max. Ambient Temp. °C</b>		<b>Mounting Type</b>	Roof Mounted	CHARGER	
<b>Class</b>	2	<b>Lamp Code</b>	4406	<b>Charger Type</b>	Trickle
<b>Wiring</b>	16mm Terminals	<b>IP Rating</b>	IP20	<b>Charging Time</b>	16 Hours
		<b>Duration</b>	2 hours	<b>Charger Operation</b>	Continuous

### SPACING TABLE (DISTANCE BETWEEN FITTINGS)

Mounting Height (m)	2.1	2.4	2.7	3.0	3.3	3.6	4.0	4.5	5.0	6.0	7.0	8.0	9.0	10.0	15.0	20.0
<b>D50 [ 0.2 Lux ]</b>	18.0	18.7	19.4	20.1	20.7	21.2	21.8	22.5	23.2	24.2	24.9	25.4	25.7	25.9	23.7	15.2

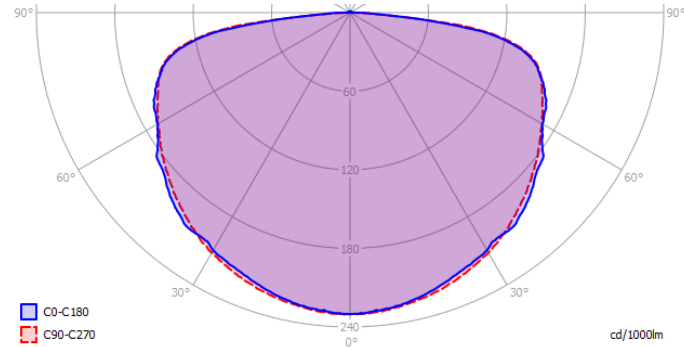
## COMPLIANCE

TEST TYPE	LABORATORY	TEST REPORT NUMBER	DATE OF ISSUE
Temperature and Duration	Light Lab International	LL1118701T	22/08/2011
Emergency Classification	Light Lab International	LL14729	22/08/2011

## ACCESSORIES AND SPARE PARTS

CODE	DESCRIPTION	CODE	DESCRIPTION
<b>1414</b>	Wireguard 36 Wide body	<b>1412</b>	Diffuser 36 Wide body
<b>4186</b>	Battery 4.8V 2500mAh	<b>4188</b>	Batten Slave endcap

## EMERGENCY PHOTOMETRIC DATA



GAMMA	C0	C22.5	C45	C67.5	C90
<b>0</b>	230.2	230.2	230.2	230.2	230.2
<b>10</b>	226.5	225.2	224.9	230.9	227.4
<b>20</b>	218	215.3	217.1	226.5	220.7
<b>30</b>	209.6	205.7	207.7	215.8	211.6
<b>40</b>	202.1	194.3	196.7	204.2	198.4
<b>50</b>	187	180	184.4	190	184.3
<b>60</b>	169.9	170	171.7	173	169.8
<b>70</b>	157.4	152.8	156.3	156.1	156.2
<b>80</b>	120.3	115	121.3	122.7	123.4
<b>90</b>	4.8	9.6	9.2	7.9	0.7

## CONSTRUCTION AND DIMENSIONS

<b>Body</b>	White Powder Coated Steel
<b>Gear Tray</b>	N/ A
<b>Diffuser</b>	N/ A
<b>Lens</b>	N/ A
<b>Cut Out</b>	
<b>Fixing Centres</b>	1000mm

